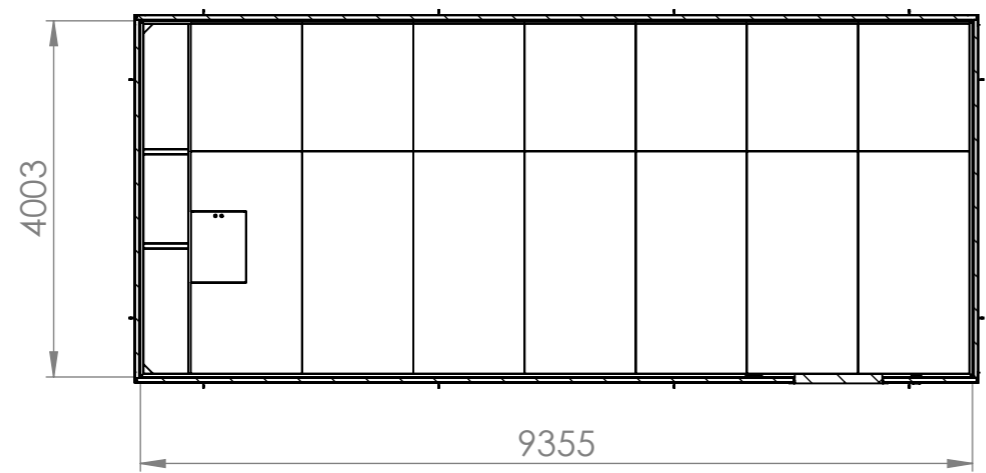
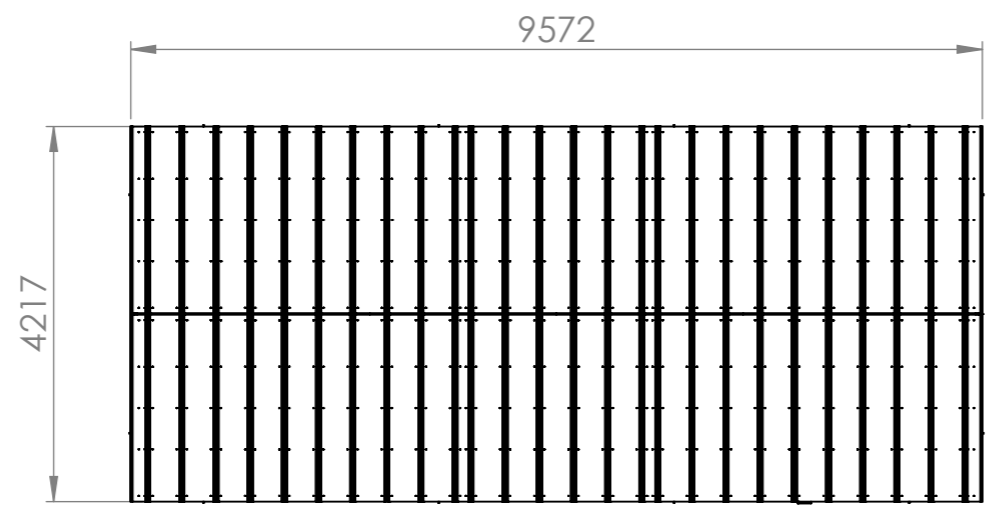
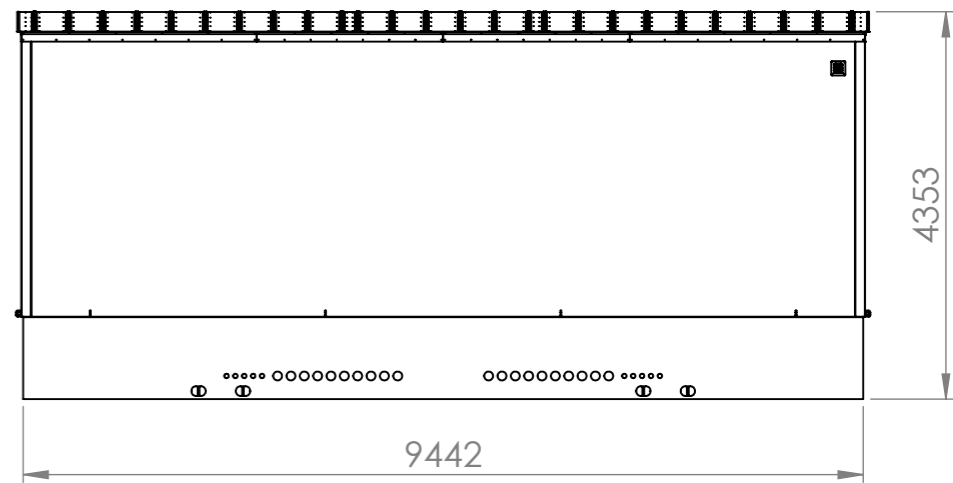
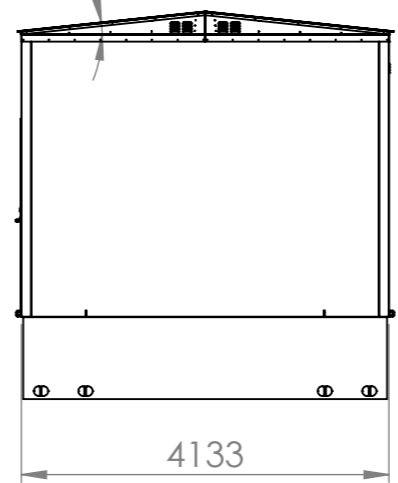
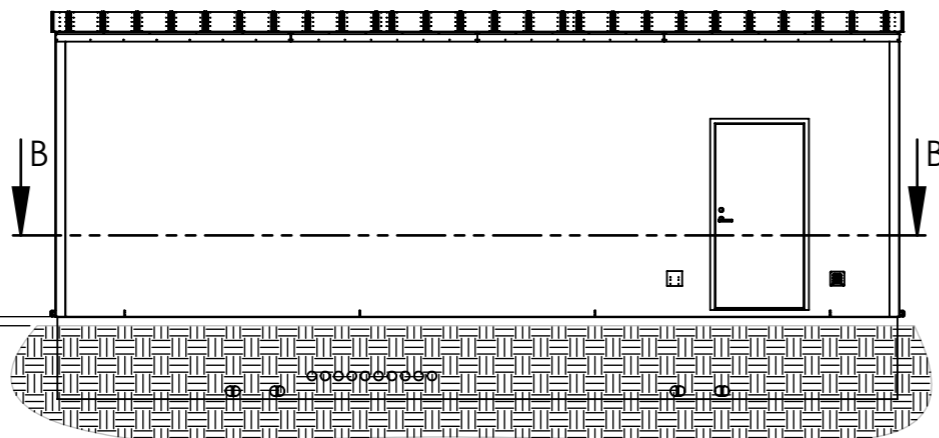
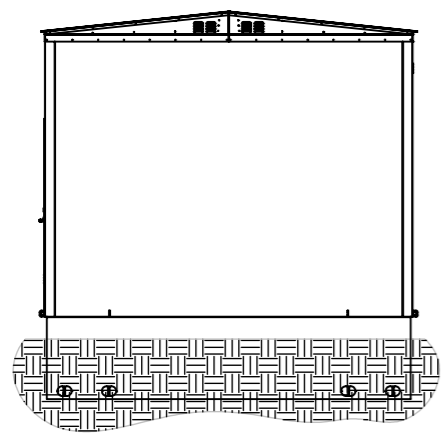


Denna ritning är KL Industris egendom. Allt obehörigt begagnande av ritningen beivras enligt lag. KL Industri AB®



SECTION B-B

Inv. höjd: 3 m
Vikt station (inkl. fundament): 25 000 kg

Konstr.	MJ	Ritad	MJ	Kop.		Kontr.		Stand.		Godk.		Skala	1:85	Datum	2018-10-04	Ersätter			
 KL INDUSTRI AB® <small>MORE ELECTRIC GROUP</small>													Tenikhus 9.4 m Byggnadsritning		Artikel Nr.	Sida	1/1	Rev.	
													Ritn. Nr.	0R104718					

Nr	Ant	Ändring	Datum	Inf.	Godk.
1					
2					
3					